

# TAILOR

Townhome Collection





Tailor is located in Brentwood Town Centre just steps from the SkyTrain and vibrant urban amenities.





MEET TAILOR

Rising above Brentwood, Tailor is a design statement from afar and up close. Modern architecture is paired with a rare level of intimacy and connection. While comfort and style flow throughout, living here also feels smart.

Set back from the corner of Alpha and Alaska, and just minutes from a central SkyTrain hub, the tower at this urban retreat is nearly sold out. Now, after a few thoughtful design improvements, we are pleased to release 5 concrete live/work townhomes for sale.

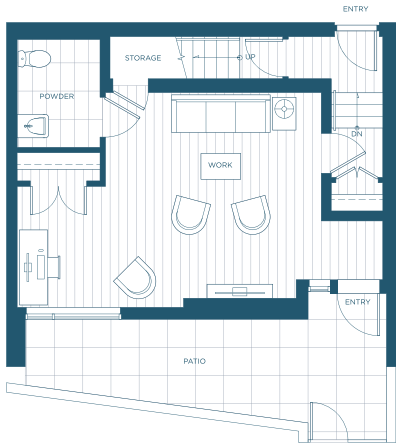
In Metro Vancouver, the amount of frontage for a home is typically restricted, resulting in deeper floorplans with less natural light. At Tailor, we had the opportunity to reimagine the standard townhome. The outcome is bigger homes, brighter spaces, and better living.

We are excited to welcome you to Marcon’s newest community in Brentwood. We want you to be among the first to see the recently released Tailor Townhome Collection.

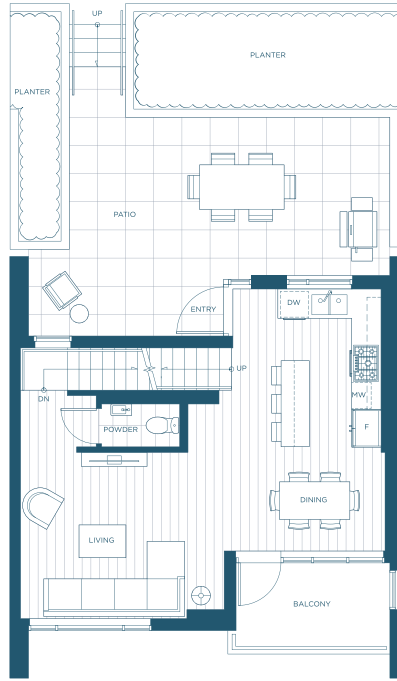


TAILOR TOWNHOME

*Spanning 27ft, townhomes at Tailor offer 33% more width than the typical narrow and deep townhome typology.*



ACCESS LEVEL



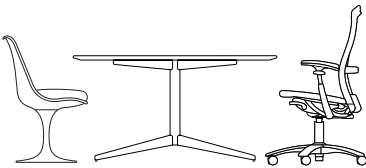
MAIN LEVEL



UPPER LEVEL

## LIVE / WORK

The open-concept lower level has been ideally configured for entertaining and/or the perfect open work environment. Offering 1 bathroom on each level for the utmost convenience, this home has contemporary living and working at the forefront of its design.



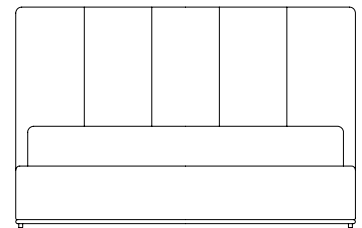
## INDOOR / OUTDOOR

Tailor has a beautifully landscaped courtyard and play area for residents to enjoy - in addition, the main level has a private landscaped patio meaning that you can savour a morning coffee just steps from your kitchen.



## 2 BEDROOM / 2 BATH

The upper level interiors have been planned to maximize light and space and are finished to stand the test of time. Airy 10' ceilings, high-efficiency heating, and air conditioning provide maximum comfort.





## FEATURES AND FINISHES



Bosch 30" integrated refrigerator and freezer



Bosch 30" 5 burner gas cooktop and Bosch 30" wall oven



Spacious bedrooms with an abundance of storage



Mirrored medicine cabinets in ensuite to store your daily bath essentials



Floating vanity with under-cabinet motion sensor lighting complete with soft-close hardware



Front-loading side-by-side Blomberg washer and dryer



AMENITY LOUNGE WITH CO-WORKING AREA





The Tailor lobby awes with forty-foot ceilings to accommodate "Wind Veil", a stunning public art piece by Catherine Widgery.





EXCLUSIVE PROMOTION

We are pleased to extend an exclusive promotion on our Townhome Collection. Our sales team is excited to speak with you about this rare opportunity to live & work in the heart of Brentwood.

- Own with only 8% down
- Receive a 5% purchaser incentive

TOWNHOME COLLECTION

PLAN	INTERIOR SF	EXTERIOR SF	TYPE
TH1	1,699 sq. ft.	677 sq. ft.	2 BR + 2 BA + 2 Powder + Work
TH2	1,669 sq. ft.	673 sq. ft.	2 BR + 2 BA + 2 Powder + Work
TH3	1,669 sq. ft.	673 sq. ft.	2 BR + 2 BA + 2 Powder + Work
TH4	1,669 sq. ft.	673 sq. ft.	2 BR + 2 BA + 2 Powder + Work
TH5	1,699 sq. ft.	821 sq. ft.	2 BR + 2 BA + 2 Powder + Work

PRICING

Starting from  
\$1,549,900

DEPOSIT STRUCTURE

5% down now, 3% down in one year (8% total).

ESTIMATED COMPLETION

Building completion estimated Fall/Winter 2024.

We look forward to connecting with you.

The Tailor Sales Team

sales@tailorbymarcon.ca

Jessica Zhang  
778.798.8245  
jzhang@marcon.ca

Sarah Fuchs  
306.580.9401  
sfuchs@marcon.ca

The material provided herein is for general informational purposes only and is not intended to depict as-built construction designs or finishes. No offering for sale can be made until after a Disclosure Statement, issued pursuant to the Real Estate Development Marketing Act of B.C., has been provided to a prospective purchaser. The Developer reserves the right in its sole discretion to make modifications or changes to building design, floor plans, project designs, specifications, finishes, features, incentives and dimensions, without prior notice. Renderings and any depicted views are artistic concepts only. Square footages are approximate and have been calculated from architectural drawings. Actual final dimensions, following completion of construction, may vary from those set out herein and in the accompanying materials. E.&O.E. Marcon Alpha (GP) Ltd. \* Pricing, promotions and incentives are all subject to change without notice. Please see Marcon Advisor for details.



